

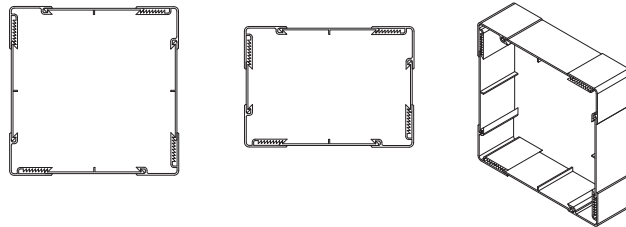


## POST WRAP SYSTEM

The Modulus Post Wrap system is easy to install. Measure the length of your post, cut to ¼" less than the length of the post, slide insert into corner stopper, and snap into place. See back page for step by step illustrated instructions.

- The Modulus Post Wrap system of interchangeable Side Inserts allow for a clean and easy installation. No nails, screws, or glue are needed. Just wrap and snap!
- The Modulus Post Wrap system is designed to handle many posts configurations, rectangular or square, from 3 ¼" up to 12 ¼" wide.
- The Modulus Post Wrap system is extruded from the highest quality PVC resins in a choice of three colors: white, tan, and adobe. Like all Homeland exterior products, the Modulus Post Wrap system is impervious to insects and moisture and will never rot, split, splinter, or decay. It will never need sanding, sealing or painting, and is covered by a limited lifetime transferable warranty.
- The Modulus Post Wrap system can be customized with colors by mixing the Corners and a second color of the Side Inserts.

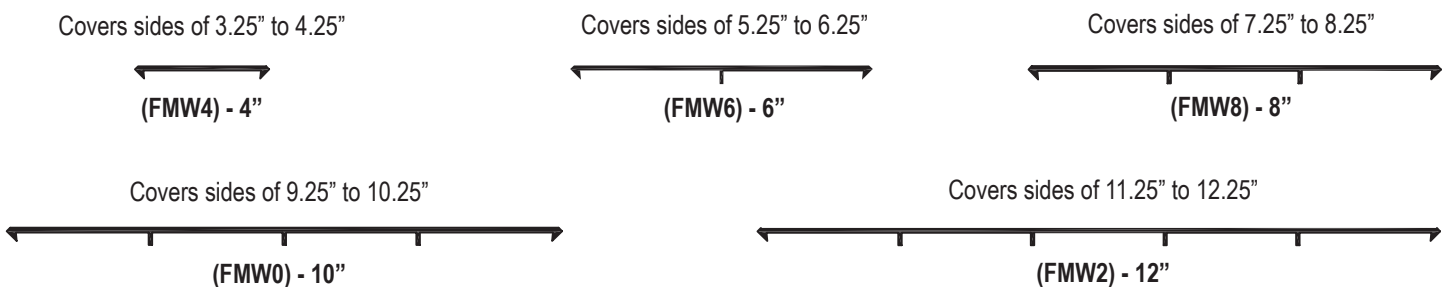
### MODULUS POST WRAP EXAMPLE CONFIGURATIONS



### MODULUS POST WRAP CORNER



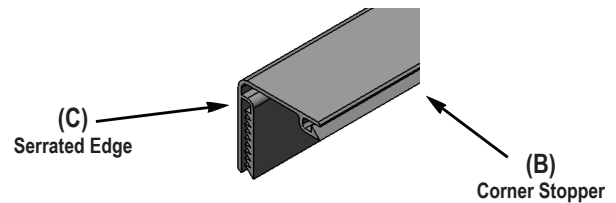
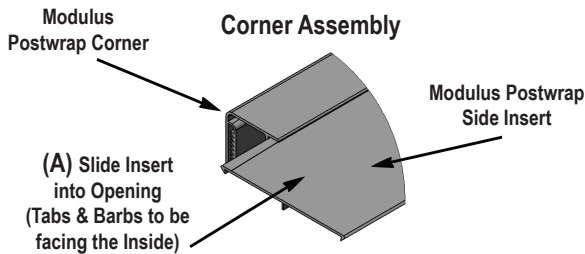
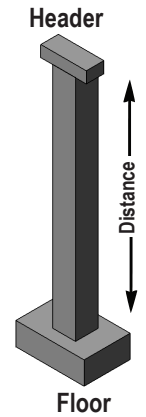
### INTERCHANGABLE POST WRAP SIDE INSERTS



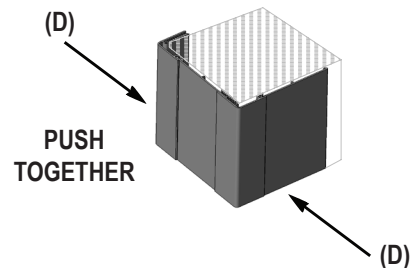
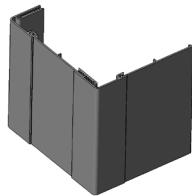


## POST WRAP INSTRUCTIONS

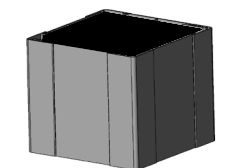
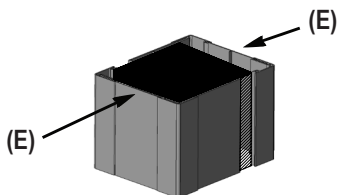
1. Measure the distance of the post between the header and the floor and cut  $\frac{1}{4}$ " shorter. Do not alter the support post in any way.
2. Measure the width of each side of the post and select the appropriate Side Inserts. Cut the Modulus Postwrap Corners and Side Inserts separately to the measured length.  
**Do not assemble before cutting.**
3. Slide a Side Insert (A) into the Corner Stopper opening (B) of a corner piece. Repeat to assemble four Corner Assemblies in an "L" shape.



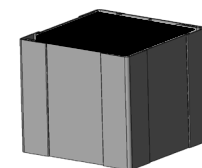
4. Connect two Corner Assemblies by inserting the side edge of one assembly into the serrated edge (C) of the other assembly. Do not push them fully together. Place the connected Corner Assemblies on the post first, and then push the assemblies together starting at the bottom of the post.



5. Repeat Step 4 on the opposite side of the post and then attach the two side assemblies, (E) to cover the entire post. Using a rubber mallet, start at the bottom of the post (F) and gently tap the corners to tighten the Postwrap and fully seat the sides to complete the installation.



Start at the bottom and snap together (F)



Completed Assembly

\*\*\* Also available to finish off the installation is Homeland Vinyl Products, Inc. 4 piece trim skirts